

NORTH SHORE DISTRICT



**"A KIND ACT CAN SOMETIMES BE AS
POWERFUL AS A SWORD"**

(Battle of the Labyrinth, Rick Riordan)

Leaders Guide

November 4-6, 2022
Smilin V Scout Ranch
250 County Rd 286 Spur
Liberty Hill, TX 78642



CONTENTS

| | |
|---|-----------|
| DISTRICT CAMPOREE CONTACTS | 3 |
| COST | 3 |
| SCHEDULE | 4 |
| MAP | 5 |
| SAFETY | 5 |
| GETTING TO CAMPOREE | 6 |
| SUPPLIES to BRING | 7 |
| CHECK-IN and CHECK-OUT | 7 |
| GETTING to CAMP | 8 |
| ACTIVITIES | 9 |
| AROUND CAMP | 11 |
| CAMPER SECURITY | 12 |
| EMERGENCY ACTION PLAN | 13 |
| BEST CAMPSITE AWARD INSPECTION SHEET | 14 |

WELCOME TO NORTH SHORE DISTRICT'S HEROES OF OLYMPUS CAMPOREE!

On behalf of Capitol Area Council and the North Shore District Crew 158, we welcome you to this fall's event at Smilin V Scout Ranch in Liberty Hill. Your staff has been working hard to plan a fun event that will showcase your troop and enjoy our North Shore scouting community.

The event is scheduled for November 4-6, 2022 at Smilin V. If you've been to one before, you know that the Fall camporee is an annual event, hosted by a Crew or Troop, inviting all North Shore District Units:

Older scout units - troops, crews, and ships - will camp individually as units in designated campsites. Each unit is asked to sponsor a station for the rotations on Saturday. Units may camp overnight Friday and/or Saturday or come out for the day on Saturday. If your unit plans to arrive or leave on Saturday please let the us know ahead of the weekend.

Packs- Webelos only (both 4th and 5th graders) - come participate in activities that the older scout units host and a camp wide challenge. They are also asked to join our camp wide feast and campfire.

During the day on Saturday, Webelos will rotate through the unit stations. All Scouts and Webelos will compete in a camp-wide challenge Saturday afternoon. Additional competitions will be held for campsites, campfire performance, entryways, Scout spirit, food and the Top Unit. Troops are encouraged to bring their favorite campfire skits and songs with a Greek or Mythological twist to share in the evening campfire. Saturday's dinner will be provided for the entire camp.

DISTRICT CAMPOREE CONTACTS

- Camp Health Officer: Connie Michaels (512) 784-7201
- NCAP Short-term Camp Administrator: Heather Spencer
- Staff Advisor: Tracy Otto (512) 585-1581, tracy@ottoclan.com
- North Shore District Advisor: Doug Cooper (512) 968-3994
- Capitol Area Council Lead Ranger: PJ Brown (979) 417-6564
- Capitol Area Council Executive: Jon Yates (512) 496-3289

COST

The registration link in Black Pug will be sent directly to the unit leaders, posted on the district website, and the council calendar. We ask that **everyone register as soon as possible** so that we can plan appropriately.

September 7- October 7, 2022 Early Bird Discount

\$22 per attendee (youth and adult)

October 7-October 26, 2022

\$27 per attendee (youth and adult)

The proceeds cover the cost of campsites, camporee supplies, shirts, Saturday dinner, and a patch.

SCHEDULE

*If noted Field Uniform is required. Webelos and Cub Scout Leaders scouts can wear their Activity Uniform (Pack T-shirt).

Friday

6:15 PM Staff arrival and setup

7:00-8:30 PM Scouts BSA units check in *Field Uniform

9:15 PM Senior Patrol Leader Meeting (with Scoutmaster)

10:00 PM Lights Out

Saturday

7:00-8:00 AM Check in for Troop Saturday arrivals *Field Uniform

7:00-8:30 AM Troops set up activity station

8:45 AM Scouts BSA Opening Assembly *Field Uniform

9:00-10:00AM Troops continue setting up camp and activity station

9:00-9:30 AM Cub Scout units check in *Field Uniform

9:30 AM Cub Scouts Opening Assembly *Field Uniform

10:00 AM-12:15 PM Station rotations

12:30 PM Lunch

1:00-2:45 PM Station rotations

3:00-4:30 PM Camp-wide Competition (All Scouts and Webleos)

4:30-5:10 PM Troops take down activities; SPL meeting in pavilion 4.

4:30-5:00 PM Cubs practice skits/songs in main pavilion

5:10 PM Flags *Field Uniform

5:30 PM Dinner *Field Uniform

5:30 PM Dessert Contest Entries Due AND Campfire submissions due
(skits, songs, stunts, stories)

7:00 PM Campfire, awards *Field Uniform

Following Campfire - Webelos check out at Main Pavilion

Following Campfire - Order of the Arrow Social at Main Pavilion

Following OA Social - OA Brotherhood ceremony *Field Uniform

10:30 PM Lights Out

Sunday

7:00 AM Wake up and breakfast

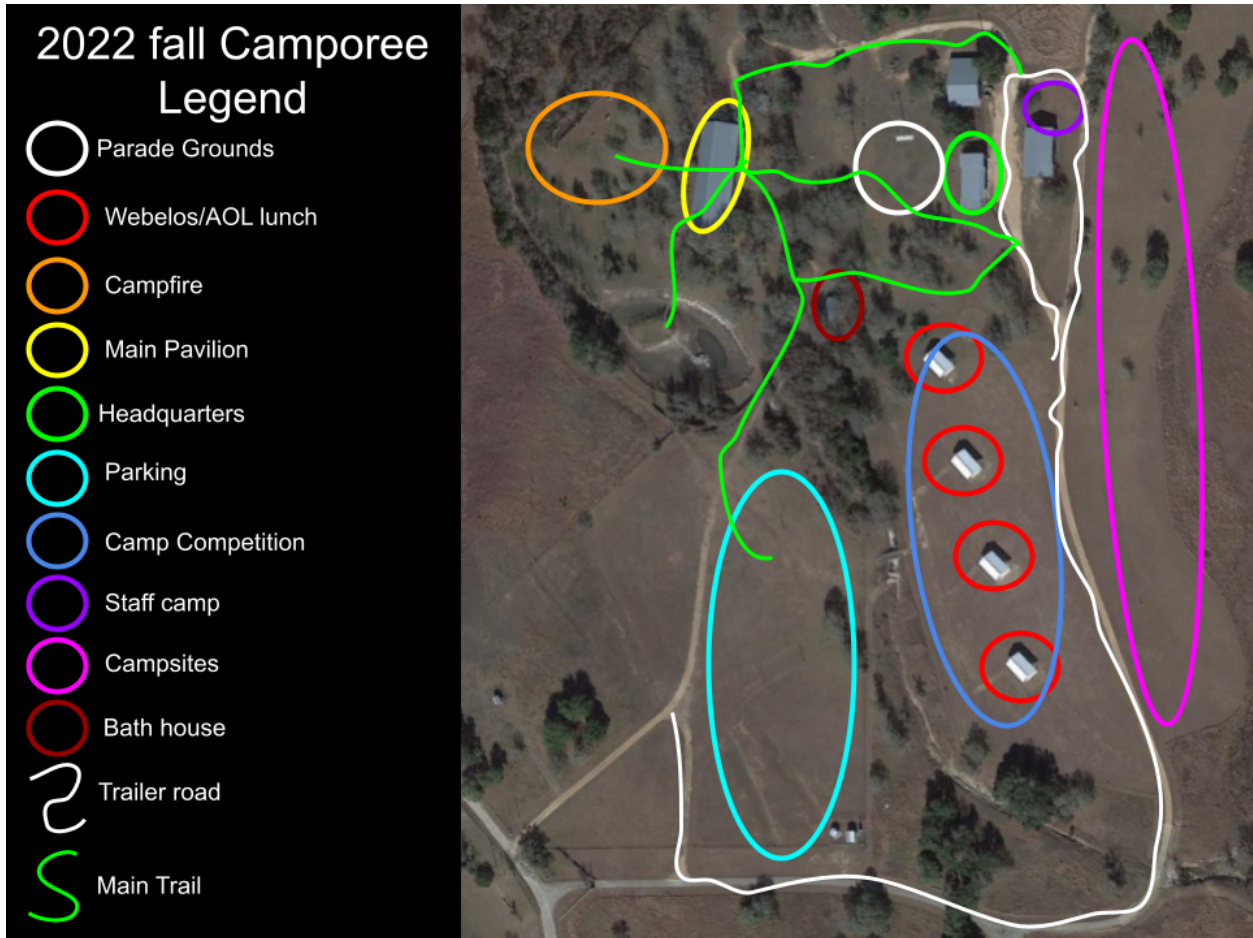
8:30 AM Flag Assembly and Scouts' Own Service *Field Uniform

Following Scouts' Own Service - Clean up, check out, and get patches

10:30 AM Last departure

Schedule is an estimation and is subject to change at any point throughout the weekend.

MAP



SAFETY

Camp Health Officer

The Camp Health Officer on site is Connie Michaels (RN). The designated Medical Lodge will be noted by the Medic Flag. The health officer will oversee routine cleaning and sanitation of medical facilities and equipment. She will typically be available in the staff camping area or the Headquarters if not in the Medical Lodge.

Bathhouse Cleaning

Bathhouses will be cleaned by the staff according to the established Council procedures. Please alert the staff if attention is needed in any stall.

Closest Emergency Services

Liberty Hill Fire Department, 301 Loop 332, Liberty Hill, TX 78642;
Non-Emergency Phone +1-512-515-5165

Inclement Weather Plan

See the Emergency Action Plan.

Accessibility

The event should allow for inclusion of all scouts and leaders. If you have any in your unit who may need extra assistance, please let us know in advance so we can address your concerns.

GETTING TO CAMPOREE

Who can attend

- **Troops/Crews/Ships: Full Weekend, Overnight, or Saturday only:** Registered members of North Shore District troops, crews, or ships. Adults must have completed the YPT course since November 6, 2020. Register and check in as a unit.
- **Packs/Cubs:** Registered Webelos (4th and 5th graders) members of North Shore District Packs and neighboring district packs. Register and check in as an individual or as a Den. **At least one parent/guardian must supervise your cub(s). If you are coming as a Den, you must provide 2-deep leadership.**
- All attendees must be pre-registered for the event.
- Visitors are allowed for Campfire only at the discretion of the Event Coordinator. Please contact Tracy Otto in advance of Camporee.

What must be done prior to Camporee

- Register in Black Pug. Each troop/crew/ship should register together as a unit. Cubs may register individually or as dens.
- Troops will need to prepare a Scouts BSA appropriate activity in which. There are continuous BSA safety updates, so please consult the latest information on Scouting Safely (Guide to Safe Scouting, SAFE Checklist, and the General Health and Safety FAQs)
- Scouts BSA units will need to plan for:
 - o At least one Adult Leader with current Hazardous Weather Training
 - o Attendance Roster
 - o Linked troops should plan to arrive together
 - o Water. Coolers may be refilled by the potable water at Smilin V.
 - o Hand washing station. May be a designated cooler with soap.
 - o First Aid Kit to be readily available during unit activity hours.
 - o Food for your unit for patrol cooking, as you would on a normal campout. Special note: Saturday dinner will be provided.
 - o Pack out all trash from your unit.. There is no dumpster at Smilin V.
- Gather forms and plan transportation. Scouts and adults who do not have complete forms will not be able to enter camp. Units should compile all documents in one folder or binder with a unit roster for those attending. Please sort the AHMR forms alphabetically by last name. Binders will be available for pick-up at departure. Forms will be required for every person upon entry:
 - o BSA Annual Health and Medical Record parts A & B.
 - o Youth Protection Training Certificate or Unit print out with YPT dates from my.scouting for EVERY adult.

SUPPLIES TO BRING

Troops:

- Individual Scout: their unit's regular weekend camping gear including tents
- Food (for all meals except Saturday dinner) and cooking equipment
- Dining flies / shelter
- Materials for Troop activity station
- Troop Flag
- Materials to construct troop campsite gateway/entryway
- Award(s) from your Troop for the best Webelos group to visit your station
- Note: Hammocks are not allowed on Council property. Drones are not allowed without council and event lead permission.

Webelos:

- Sack lunch (Lunch is not provided)
- Water bottle
- Day pack with essentials (rain gear, sun protection, bug protection, personal first aid kit, light source such as flashlight or headlamp)
- Chair or blanket (optional for seating at campfire)

CHECK-IN AND CHECK-OUT

Check-in Times

- **Staff Arrival:** Staff should arrive between 5:30-6:15 PM, November 4, 2022.
- **Older scout units Friday Arrival:** Scouts and adult leaders may arrive between 7:00 and 8:30 PM on November 4, 2022. Check-in at Main Pavilion.
- **Older scout units Saturday Arrival:** Scouts and adult leaders may arrive between 7:00 and 8:00 AM Saturday morning, November 5, 2022. Check-in at Headquarters.
- **Younger scout units Saturday Arrival:** Scouts and their parent/guardian may arrive between 9:00 and 9:30 AM Saturday morning, November 5, 2022. Check-in at Main Pavilion.

All staff and attendees must check in upon arrival during the above times. For all other times, check-in and out will be at Headquarters.

Check-in Procedures

Troops

Upon Friday night arrival, vehicles will be guided to parking spots. Once the entire group has arrived, units may proceed to the main pavilion to check-in. Each unit is allowed one vehicle and attached trailer to enter the campsite area. Only one adult driver is allowed in the vehicle that goes to the campsites. Trailers will be directed where to park alongside the unit's campsite area. Drivers wait at the campsite or return to the main pavilion for check-in with their unit.

At check-in, all required paperwork will be reviewed. Papers may be organized in a folder or binder and will be returned at the end of the event. Each participant will be provided a wristband that must be worn while at Camporee.

Check-in Webelos

Upon Saturday morning arrival, vehicles will park in the parking lot. Webelos and their leaders and/or parents will proceed to the Main Pavilion for check-in. Bring required paperwork and your daybags including lunch. Paperwork may be organized in a folder or binder and available for pick up at the end of Saturday. Each participant will be provided a wristband to be worn while at Camporee. Webelos and leaders/parents will stay in the Main Pavilion for the Cub Scout Opening Ceremony followed by a walk to the event field.

Check Out - Webelos

After the campfire, Webelos and their leaders/parents should verify they have everyone and all their belongings. Then, they should proceed to the Main Pavilion for departure. At completion of check-out, participants will be given event patches and any paperwork that can be returned.

Check Out - Scouts/Crews/Ships

Units may leave at any time but must inform the staff and record their departure at Headquarters. If you have individuals leaving before the unit, the scout or adult should check out with their unit's Scoutmaster and then check out at headquarters.

When your campsite is clean, your Senior Patrol Leader (or Crew President) should report to the Staff at Headquarters in the main pavilion. Staff will assist with check out of each unit after the area has been confirmed clean. The staff will confirm with the Scoutmaster that the entire troop is departing. At the completion of check out, the Senior Patrol Leader will be given patches and any paperwork that can be returned.

GETTING TO CAMP

Smilin V Scout Ranch is located at 250 County Rd 286 Spur, Liberty Hill, TX 78642.

Parking

Parking for non-trailer cars will be limited to the standard parking lot. Only one trailer per Unit will be allowed to enter at the north entrance and will park in the designated area as directed by staff.

Campsite

There will be designated campsites for each unit. The staff will communicate the exact location upon arrival. Reminder: adults and youth do not share tents. Please keep your campsite clean throughout the event.

Note: Ground fires, including charcoal, are not allowed. If you plan to cook with fire or coals, you must bring your own off-the-ground fire pit.

Linked Troops

Please arrange to travel together. If your partner troop arrives at a different time, have the driver of the campsite vehicle alert the campsite set up staff that more room will be needed.

Entry/Exit

The intention is for all to stay the duration of the event. Special circumstances may be pre-approved by the unit's Scoutmaster and Event Director. All arrivals and departures must be recorded by a staff member at headquarters.

Visitors

Visitors must have pre-approval from the Event Director. Visitors may attend Campfire only. They must check-in and out at the pavilion with a staff member.

ACTIVITIES

Senior Patrol Leader Meetings

There will be one SPL meeting on Friday night in Pavilion. SPLs may bring one Scoutmaster to the Friday night's meeting. On Saturday afternoon, the SPLs will meet at Pavilion 4 at 4:30 PM for the second SPL meeting. Scoutmasters do not need to attend the second SPL meeting. Any updates for Sunday departure will be given during the SPL meetings.

Flag Ceremonies

Flags will be held Saturday morning, before dinner and Sunday morning.

Unit Competitions

Each troop is requested to host an activity for other units. Units will rotate through stations during activity times. Each activity should be able to be completed within 10-15 minutes. Activities are highly encouraged to follow the Camporee theme (Greek Mythology) and scout-related activities, such as fire building, knot tying, Scout trivia, First Aid, Pioneering, rope making, games, team building, etc. Get creative, with the idea of reinforcing scout skills while having fun. All activities must have staff approval before Camporee. The unit should have a method of scoring the units that visit their station. The results should be point-based 0-50 and turned into the Staff at the conclusion of the rotations. During check in the troops should hand over an award that they have made at a troop meeting.

Camp-Wide Challenge

On Saturday afternoon, the staff will host a separate Heroes of Olympus competition. The event will be Capture the Flag. There will be four teams consisting of both Scouts BSA, and Webelos. More details will be provided prior to the challenge starting. The only time you should touch another player is to tag them. Any tackling, fighting, or non appropriate cases of touching will result in immediate disqualification of your whole team. Remember we are scouts so have fun and play nice.

Campfire

Campfire will be held with skits/songs managed by the staff program team. Each unit and staff will be allowed to perform one skit or song, pre-approved by the staff. An award will be given for the best performance that fits the theme Heroes of Olympus. If a unit has visitors, they should sit with the unit.

Saturday Campfire Awards

- Odysseus Award (Winners of Camp-Wide Challenge)
- Siren Award (Best Scout Spirit)
- Elysium Award (Best Campsite)
- Aegis Award (Best Entry/Gateway)
- Apollo Award (Best Activity Station)
- Ambrosia Award [Best Dessert (youth and adult categories)]
- Dionysus Award (Best Campfire performance)
- Gelos Award (Best Joke During campfire)
- Hestia Award (Top Den)
- Troop Activity Award

Order of the Arrow Social

Current Order of the Arrow members may join together for fellowship in the main pavilion after campfire to enjoy the fellowship of other OA members and hear updates from our chapter leaders.

Brotherhood Ceremony

For Order of the Arrow Ordeal members who completed their ordeal in May 2022 or before, you are welcome to complete your Brotherhood walk and ceremony. Meet after the OA Social. Please mark your online registration and bring \$20 to check in to cover the cost of a new sash.

Chapel

On Sunday morning scouts will gather at the assembly area for closing flags and a Scouts' Own Service.

AROUND CAMP

Communication

During the weekend, communications will be handled by the staff using megaphones or air horns to let groups know to move from station to station. The staff will carry radios to allow for remote communications. Cell service is spotty on campgrounds. There is no WiFi.

Building Use

All building use will follow the established and approved council procedures. The only structures in use by participants will be the pavilions and the bathhouse.

Water Stations

Units must supply water dispensers for participants. No ice will be available, but potable water is available from spigots available on the exterior of the bathhouse, on the front of the stable, on the exterior of the office, in campsite 4, and campsite 5. Do not come to the main pavilion for water.

Webelos may refill water bottles at troop stations or water jugs at small pavilions.

Food

Meals (Saturday breakfast and lunch, and Sunday breakfast) will be handled by the patrols within each unit campsite. Camporee staff will have its own quartermaster team to manage their meals. During food preparation times, dining, and cleanup, Scouts BSA units should remain in their campsites. Webelos Scouts, Leaders and parents will eat in designated pavilions labeled on the map.

New this Fall: Saturday dinner will be provided for all attendees. We will be having Bush's Chicken. In the registration form you may denote any dietary restrictions (vegetarian, no dairy, no gluten, no nuts). Questions? Contact tracy@ottoclan.com

Headquarters

Headquarters will be in the building with a porch near the campsites. The staff will maintain a presence at headquarters. Participants will be allowed to enter for questions but will not be allowed to stay in the area for more than a few minutes. Anyone arriving or leaving at non-designated times must check in and out at headquarters.

Main Pavilion

The main pavilion will be used for initial check in during designated times, scouts own, Cub Scout gatherings, and the brotherhood ceremony gathering point.

Staff

Please ask any staff member if you have a question or need help. Running camporee is a full-time job over the weekend and please remember the scouts are learning leadership! The staff will be dining as a group in the main pavilion and camping near the open barn (see map).

Facilities

There is a bathhouse with individual stalls and, depending on total attendance, there may be portapotties available at the camp.

Potable water is available for refilling water coolers at designated locations. Do not use the main pavilion to fill water jugs.

Trash

Units are required to collect and haul trash offsite after the event. There are no trash receptacles at Smilin V.

Wi-fi service

none available

Electricity

Electricity is available in the small pavilions. If you need electricity overnight for medical concerns (example CPAP), please let the staff know before arriving at camp so arrangements may be made.

CAMPER SECURITY

Make sure all forms are filled out prior to arriving at Camp please, think of those waiting to be checked in after you. A Scout is courteous.

All fields on the online unit registration form for each camper must be filled out and a current attendance roster turned into the admin staff upon arrival.

Standard AO-804 No youth camper can leave camp without the unit leader first bringing the camper to admin and meeting the person signing the camper out in the presence of an admin staffer. All adult participants will sign out if leaving the event before the end.

Standard AO-804 Wristbands will be used throughout the event, any person who is not wearing a wristband should be reported to an adult camporee staff member right away.

Standard AO-804 Any unauthorized person in camp who may pose a possible threat should be reported to 911 and camporee staff notified right away.

Standard AO-804 Page 14 Per BSA requirements, at least two registered adult leaders who are 21 years of age or older are required to attend with each unit, and to be present during the entire Camporee. Units bringing female youth must bring at least one registered adult female who is 21 years of age or older. All adults must have a current Youth Protection Training certification.

EMERGENCY ACTION PLAN

Smilin' V Scout Ranch
250 County Road 286 Spur
Liberty Hill, TX 78642

EMERGENCY: Medical, Fire, Sheriff: CALL 911.
Address of camp is 250 County Road 286 Spur, Smilin V Scout Ranch.
Notify camp headquarters immediately after calling 911.

IMPORTANT PHONE NUMBERS:

Camporee Coordinator: Tracy Otto (512) 585-1581
Camp Health Officer: Connie Michaels (512) 784-7201

EMERGENCY SHELTER:

In case of dangerous weather, proceed to the main pavilion. If you cannot reach the main pavilion the campsite pavilions may be used as an emergency shelter. If you cannot get any of these buildings, the following standard safety procedures should be followed:

LIGHTNING:

1. Adults keep your car keys with you at all times
2. When lightning and thunder are less than 30 sec apart, seek shelter in an enclosed vehicle or building.
3. Do NOT seek shelter under a lone tree.

TORNADO:

1. All campers will seek shelter in a ravine or other low area.
2. Lie flat with hands/arms shielding head and face.

BEST CAMPSITE AWARD INSPECTION SHEET

Objective: To set up a model campsite.

Procedure: As a Troop/Patrol, decide the best way to set up your camp in the area you have been assigned. Take into consideration all the things the completed campsite will be judged on.

Rules: Staff will be allowed in the campsite during judging. Any scouts and adults in camp at the time of the inspection are asked not to interact with the judges unless asked.

Judging Criteria:

| Overall Campsite | Points Possible |
|---|------------------------|
| Tents arranged neatly with patrol areas easily identified | 10 |
| Tents assembled correctly, including ground cloths and stakes | 10 |
| Troop identification prominently displayed | 5 |
| Grounds clean, free of all debris and hazards | 10 |
| Well defined camp perimeter | 10 |
| Camp gadget or entryway | 10 |
| Subtotal | 55 |
| Kitchen Area | Points Possible |
| Mess gear properly washed and stored | 10 |
| Vivable provisions made for trash/recycling | 5 |
| Menu and duty roster posted | 5 |
| Fire pits meet Smilin V requirements | 10 |
| Hand washing station | 5 |
| First Aid Kit readily available | 5 |
| Stoves safe and operating properly | 5 |
| Subtotal | 45 |
| Grand Total | 100 |